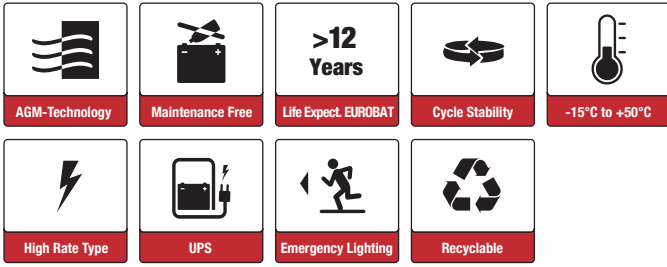




SBL151-12HR (12V3956W)



Applications

- Uninterruptable Power Supply (UPS)
- Electric Power System (EPS)
- Emergency backup power supply
- Emergency light
- Railway signal
- Alarm and security system
- Communication power supply
- DC power supply

Certificates



Specifications

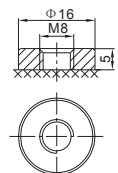
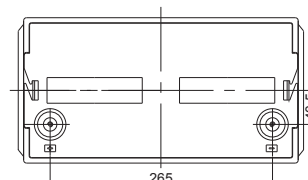
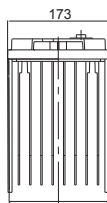
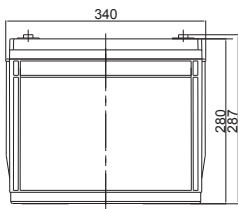


Nominal Voltage	12V	Nominal Oper. Temp. R.	20±3°C
Nominal Capacity	146.2Ah (C ₁₀ , 9.6V)	Operating Temp. Range	Discharge: -20~50°C Charge: -10~50°C Storage: -20~50°C
Approx. Weight	44.0kg	Standby Use	No limit on Initial Charging Current. Voltage 2.295 V/cell at 20° C. Temperature Coefficient -20mV/°C.
Terminal	M8	Capacity affected by Temp.	40°C 103% 25°C 100% 0°C 86%
Container Material	ABS UL94 HB	Self Discharge	SSB batteries may be stored for up to 6 months at 20°C and then a freshening charge is required. For higher temperatures the time interval will be shorter.
Nominal Power	5 min 4698.0W (20°C / 9.6V/Block) 10 min 3955.8W 15 min 3289.2W	Life Expectancy	>12 years according to EUROBAT
Nominal Power	5 min 783W (20°C / 1.6V/Cell) 10 min 659.3W 15 min 548.2W		
Max. Discharge Current	1450A (5s)		
Internal Resistance / Impedance (1kHz)	Approx. 4.5mΩ		

Dimensions

■ M8 Terminal

Unit: mm | Dimensions: 340 Length X 173 Width X 280 Height (287 Height incl. Terminal)



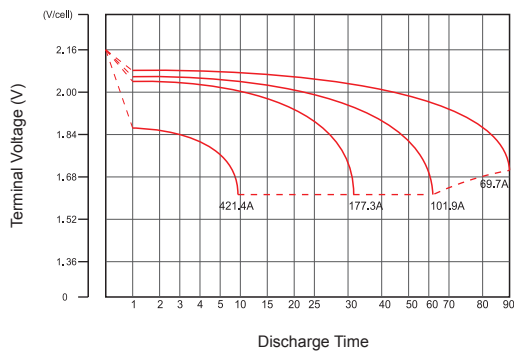
Constant Current Discharge (Amperes) at 20°C

F.V/Time	5min	8min	10min	15min	20min	30min	60min	90min	3h	5h	8h	10h
9.6V	426.1	378.6	350.5	287.6	234.2	172.6	99.9	71.7	38.64	26.49	17.70	14.62
10.0V	386.7	347.1	324.0	268.2	220.1	163.3	95.3	68.8	38.13	26.19	17.53	14.48
10.2V	370.2	333.7	312.3	260.0	213.9	159.4	93.4	67.4	37.44	25.78	17.29	14.29
10.5V	341.8	310.8	292.8	246.0	203.2	152.6	90.1	65.3	36.54	25.24	16.97	14.05
10.8V	313.2	287.9	273.3	232.8	193.7	146.2	86.9	63.2	35.34	24.52	16.55	13.72
11.1V	268.8	245.2	231.5	200.1	168.1	129.3	78.5	57.6	33.78	23.58	16.00	13.29

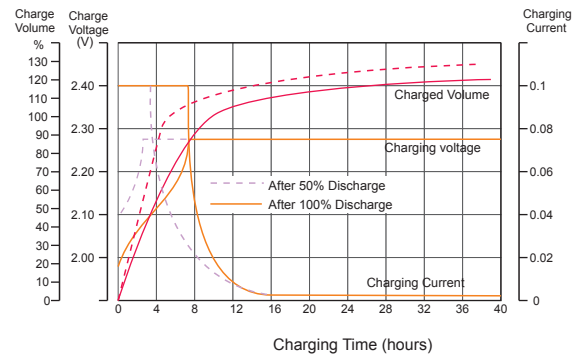
Constant Power Discharge (Watts/cell) at 20°C

F.V/Time	5min	8min	10min	15min	20min	30min	60min	90min	3h	5h	8h	10h
9.6V	4698.0	4230.0	3955.8	3289.2	2700.0	2012.4	1125.6	814.2	449.47	311.03	210.56	174.98
10.0V	4372.2	3968.4	3733.2	3120.0	2577.0	1929.6	1083.6	787.2	446.22	309.02	209.08	173.68
10.2V	4228.8	3849.6	3628.8	3048.0	2521.8	1890.6	1065.6	775.8	439.31	304.84	206.52	171.58
10.5V	3968.4	3637.8	3447.0	2916.0	2420.4	1828.2	1036.2	754.8	430.48	299.46	203.11	168.83
10.8V	3693.6	3414.6	3255.0	2786.4	2329.2	1764.0	1005.6	734.4	418.04	291.99	198.54	165.10
11.1V	3217.2	2949.0	2794.8	2422.2	2040.6	1573.8	914.4	675.6	401.37	281.75	192.35	160.16

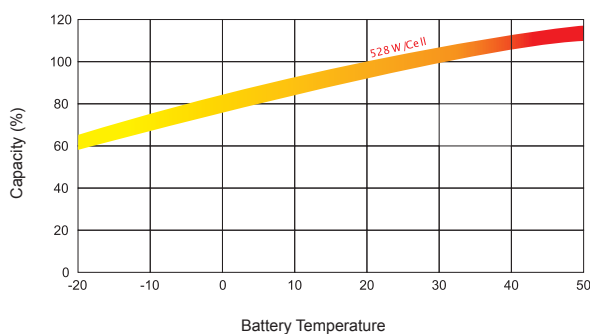
Discharge Characteristics



Float Charging Characteristics



Temperature Effects in Relation to Battery Capacity



Effect of Temperature on Long Term Float Life

